



# TECH DATA SHEET

## REPORTER VIRUS PARTICLES

### DESCRIPTION

<b>Product</b>	RVP-768G, SARS-CoV-2 Reporter Virus Particles (RVPs)
<b>Lot</b>	CG-296A
<b>Strain</b>	Omicron BA.1
<b>Reporter</b>	GFP
<b>Size</b>	1.0 mL/vial
<b>Packaging</b>	20% FBS/DMEM
<b>Viral Titer</b>	1.14 x 10 <sup>6</sup> TU/ml
<b>Recommended Input</b>	20uL per well (96-well plate) for ~20% infectivity in a flow assay*
<b>Mycoplasma Test</b>	Negative
<b>Expiration Date</b>	December 2025

### SAFETY & HANDLING

<b>Shipping</b>	Shipped on dry ice
<b>Stability and Storage</b>	Store at $\leq -80^{\circ}\text{C}$

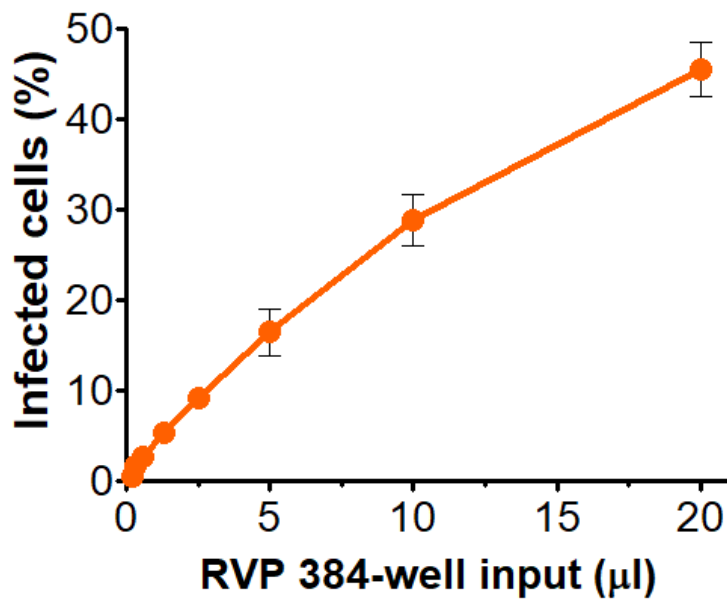
\* Determined in the 293T-ACE2 stable cell line

SARS-CoV-2 RVPs are used to test the ability of serum, antibodies, and drugs to neutralize the infectivity of SARS-CoV-2 spike protein. RVPs display antigenically correct spike protein pseudotyped on replication-incompetent virus particles that contain a heterologous lentiviral (HIV) core. RVPs are capable of a single round of infection and carry a genome that expresses either a GFP or luciferase optical reporter gene upon infection. RVPs are produced in HEK-293T cells using three separate plasmids, encoding the spike protein, a lentiviral gag polyprotein, and a reporter gene. RVPs are created using a second-generation lentiviral system with components that are highly unlikely to recombine to produce a fully infectious virus (requiring 3 separate recombination events to do so). However, lentiviruses are capable of genomic integration and RVPs are derived from biological materials so should be handled with caution within a BSL2 or enhanced BSL2 laboratory environment. RVPs are not to be used in humans or in animals raised for food.

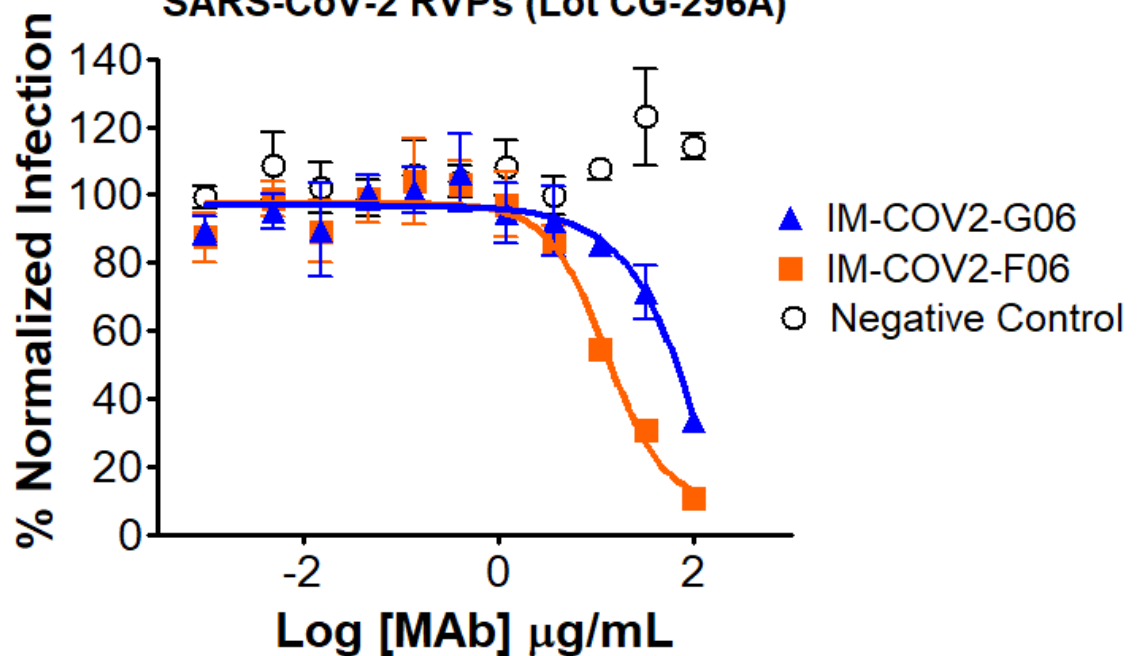
Thaw tubes in a 37°C water bath for 3 minutes and place on ice until ready to use. RVPs will appear as a translucent, pink solution. Gently mix prior to use and pulse tube for 3 seconds at high speed in a tabletop microfuge to recover all volume from the tube. Excessive vortexing of RVPs should be avoided. Re-freezing of RVPs is not recommended.

## INFECTIVITY AND NEUTRALIZATION DATA

## SARS-CoV-2 RVPs (Lot CG-296A)



## SARS-CoV-2 RVPs (Lot CG-296A)



Infectivity determined in HEK-293T cells stably over-expressing ACE2 (Integral Cat# C-HA102).

Neutralization utilized 5 µl of SARS-CoV-2 RVPs in a 384-well plate, with Integral Molecular's anti-SARS-CoV-2 monoclonal antibodies (Cat#'s IM-COV2-F06 and IM-COV2-G06). GFP positive cells were detected with an Intellicyt iQue flow cytometer using the BL-1 channel (Ex. 488 nm, Em. 530).