



# TECH DATA SHEET

## REPORTER VIRUS PARTICLES

### DESCRIPTION

<b>Product</b>	RVP-707L, SARS-CoV-2 Reporter Virus Particles (RVPs)
<b>Lot</b>	CL-144A
<b>Strain</b>	South African Variant
<b>Reporter</b>	<i>Renilla</i> Luciferase
<b>Size</b>	1.0 mL/vial
<b>Packaging</b>	20% FBS/DMEM
<b>Recommended Input</b>	10 $\mu$ L per well (96-well plate) for a S:B $\geq$ 200*
<b>Mycoplasma Test</b>	Negative
<b>Expiration Date</b>	January 2025

### SAFETY & HANDLING

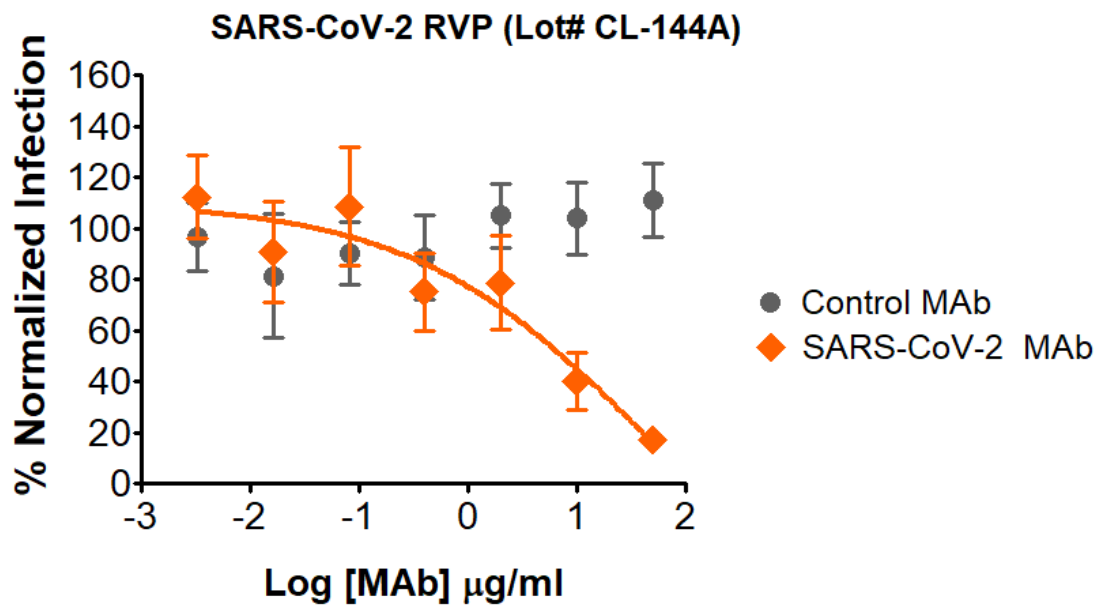
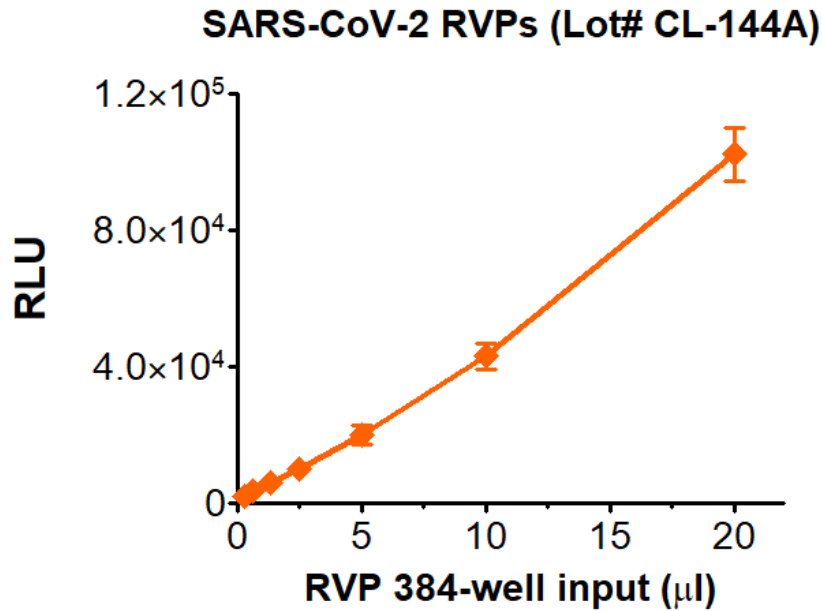
<b>Shipping</b>	Shipped on dry ice
<b>Stability and Storage</b>	Store at $\leq$ -80°C upon receipt

\* Determined in the 293T-ACE2 stable cell line

SARS-CoV-2 RVPs are used to test the ability of serum, antibodies, and drugs to neutralize the infectivity of SARS-CoV-2 spike protein. RVPs display antigenically correct spike protein pseudotyped on replication-incompetent virus particles that contain a heterologous lentiviral (HIV) core. RVPs are capable of a single round of infection and carry a genome that expresses either a GFP or luciferase optical reporter gene upon infection. RVPs are produced in HEK-293T cells using three separate plasmids, encoding the spike protein, a lentiviral gag polyprotein, and a reporter gene. RVPs are created using a second-generation lentiviral system with components that are highly unlikely to recombine to produce a fully infectious virus (requiring 3 separate recombination events to do so). However, lentiviruses are capable of genomic integration and RVPs are derived from biological materials so should be handled with caution within a BSL2 or enhanced BSL2 laboratory environment. RVPs are not to be used in humans or in animals raised for food.

Thaw tubes in a 37°C water bath for 3 minutes and place on ice until ready to use. RVPs will appear as a translucent, pink solution. Gently mix prior to use and pulse tube for 3 seconds at high speed in a tabletop microfuge to recover all volume from the tube. Vortexing of RVPs should be avoided. Re-freezing of RVPs is not recommended.

## INFECTIVITY &amp; NEUTRALIZATION DATA



Infectivity determined in HEK-293T cells stably over-expressing ACE2 (Cat# C-HA102).

Neutralization utilized 5 µl of SARS-CoV-2 RVPs in a 384-well plate. *Renilla* luciferase activity measured using the Promega *Renilla*-Glo luciferase assay system (Promega #E2710). Sample luminescence was read using a Perkin-Elmer Envision plate reader.

SIGNAL TO BACKGROUND	
RVP 384-well Input ( $\mu$ l)	Signal: Background
20	2844
10	1197
5	553
2.5	284
1.25	164
0.63	103
0.31	52

Signal to background is calculated using mock infected cells as the negative control value. Data are based on replicates of four wells. Devices used to read luminescence will vary in relative light unit values based on their individual detectors and software, but the signal to background will be comparable across devices.